

# SERIES 30

## 1" x 3/4" End Suction Centrifugal Pump

The Series 30 pump delivers exceptional performance and reliability for diverse applications, including agricultural, commercial, industrial, and OEM systems. Designed for convenience, it is close-coupled to standard NEMA "C" face motors for quick installation and broad compatibility. Construction options include cast iron, bronze, or aluminum, enabling the pump to handle a wide range of liquids.

### Key Features:

**Corrosion Resistance:** All fasteners are stainless steel, minimizing corrosion and extending service life.

**Balanced Impellers:** Dynamically balanced for improved efficiency and longer bearing life.

**Durable Mechanical Seal:** Standard carbon/ceramic/Viton seal is self-adjusting, corrosion-resistant, and suitable for most liquids.

**Quick Mounting:** MP PumPAK® mounts to standard NEMA 56C frame motors in minutes for fast, hassle-free setup.

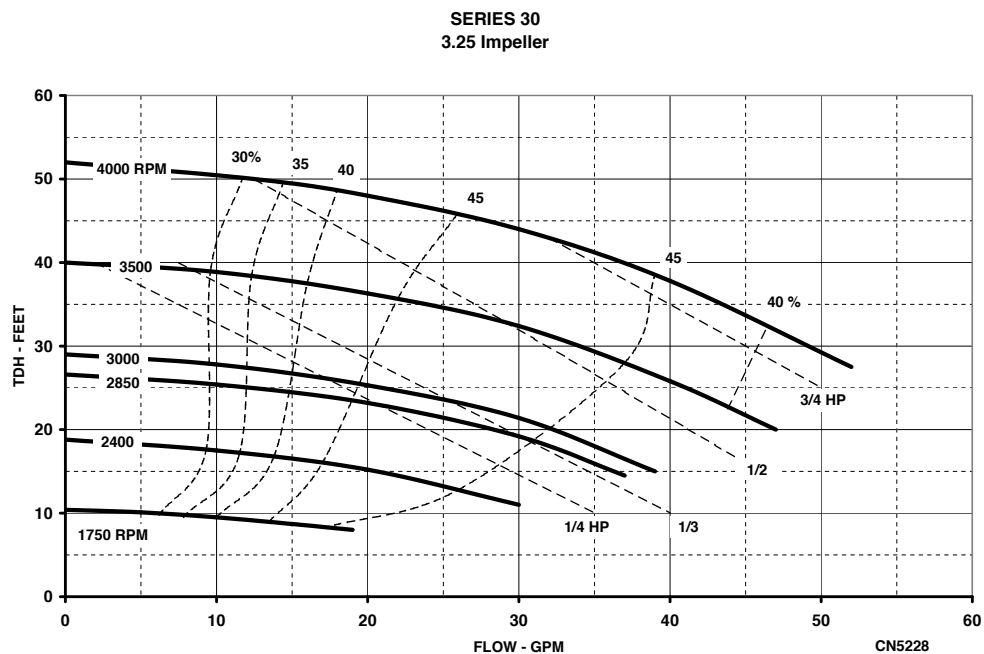
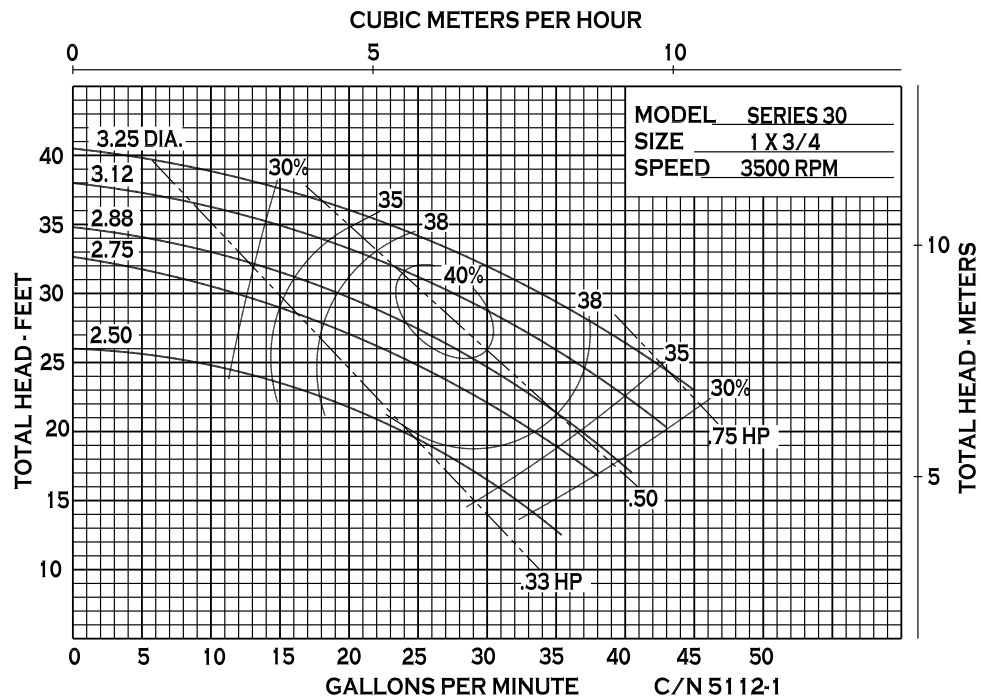
### SPECIFICATIONS:

<b>Suction / Discharge</b>	1" x 3/4" NPT
<b>Materials of Construction</b>	Bronze, Cast iron
<b>Flow</b>	Up to 45 GPM (10.2 m <sup>3</sup> /h)
<b>Head Feet</b>	Up to 40' (12 m)
<b>Impeller</b>	3.25" (82.55 mm) semi-open cast iron, bronze
<b>Motor</b>	Up to 1 HP (0.74 kW)
<b>Seal</b>	Special seal material combinations available (consult factory), Standard carbon / ceramic / Viton
<b>Drive Options</b>	Close coupled 56C PumPAK® (without motor)
<b>Max Solid Size</b>	.27" (7 mm)

### Application:

- Agricultural
- Commercial
- Industrial
- OEM

## PERFORMANCE CURVES



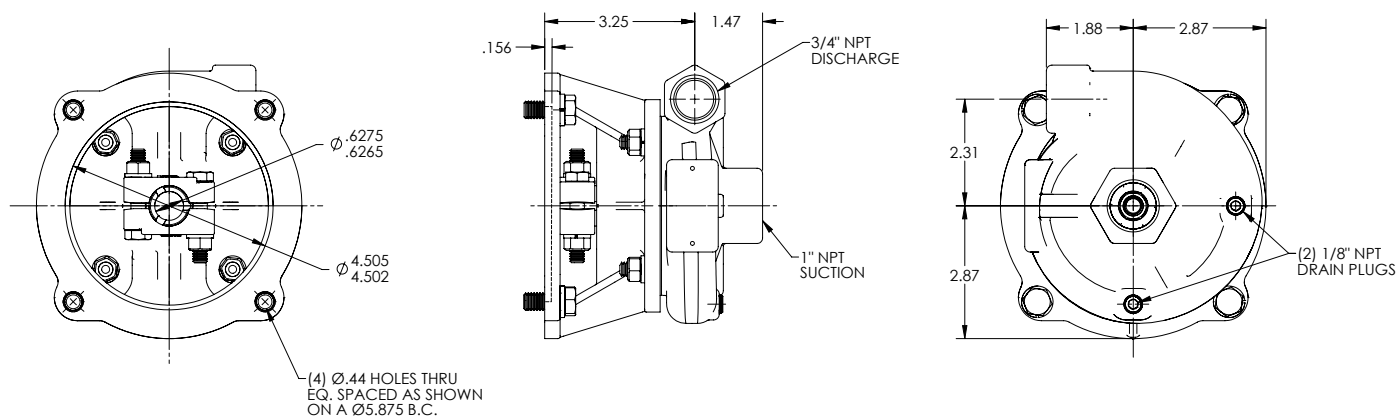


An Ingersoll Rand Business

# SERIES 30

## DIMENSIONS

S30PPK B:RR 1X3/4 CFR 5/8 3.25 HD (MP23220)



\* For complete parts lists and troubleshooting guidance, please refer to the MP Pumps Installation Operation & Maintenance (IOM) Manual.



12500 South Pulaski Road  
Alsip, IL 60803, USA  
Phone (800) 563-8006